



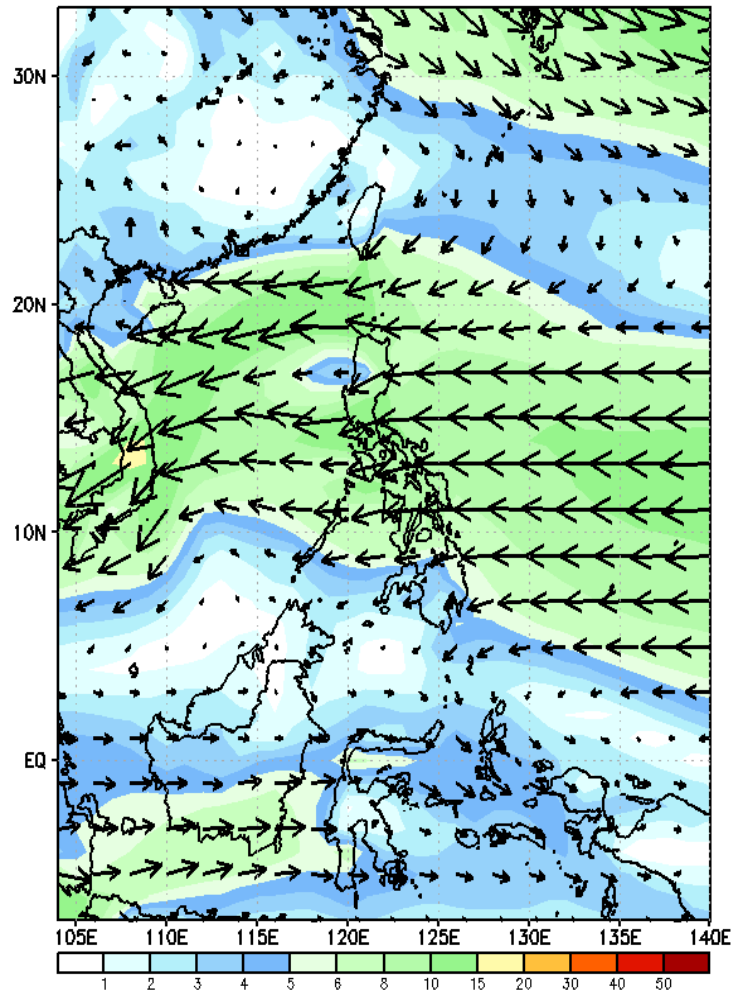
# Week 1 & Week 2 Forecast for the Philippines using GEFS Model



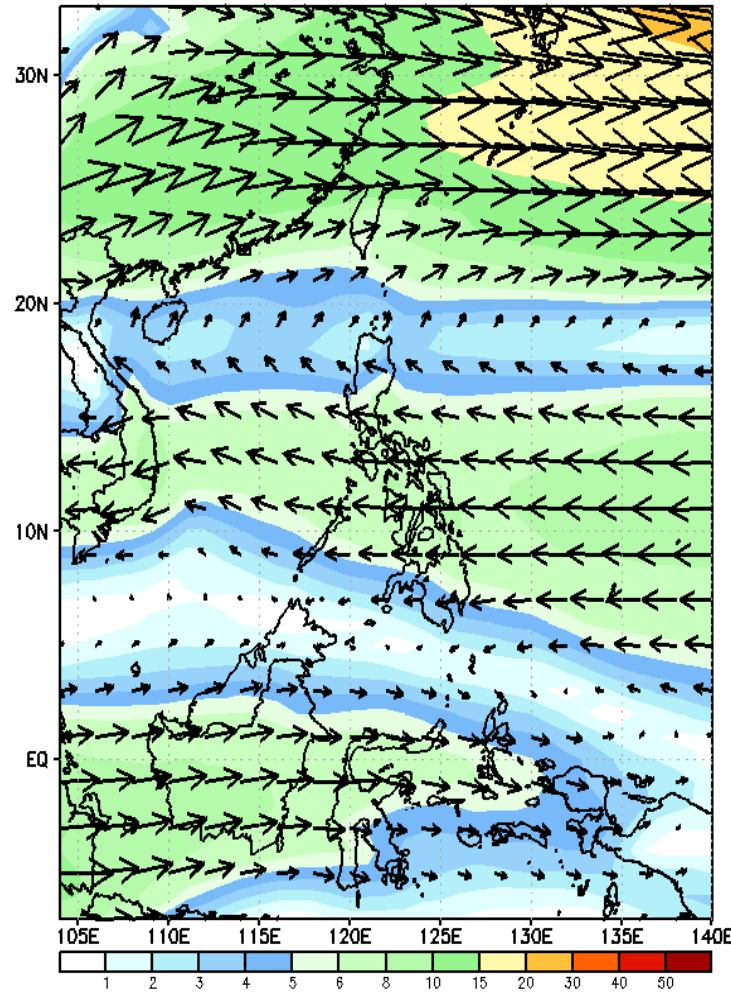
# GEFS Week-1 Wind Forecasts:

Week 1: Dec 23-29, 2024

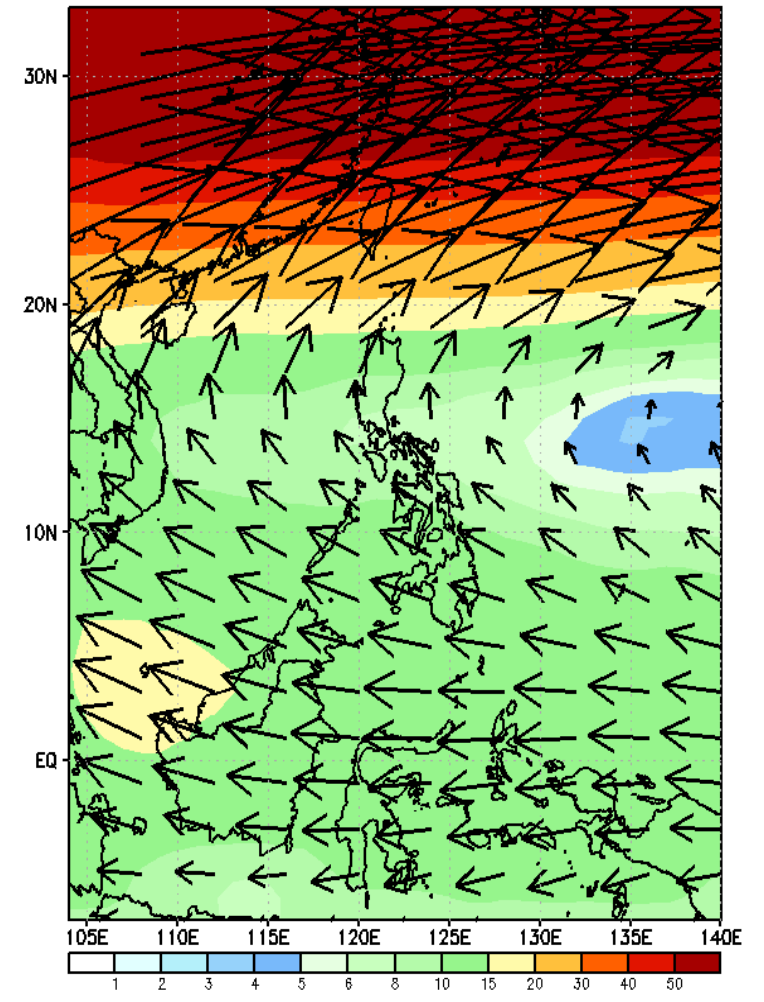
GEFS Week-1 850-hPa Wind Total  
Valid: 20241223 - 20241229



GEFS Week-1 700-hPa Wind Total  
Valid: 20241223 - 20241229

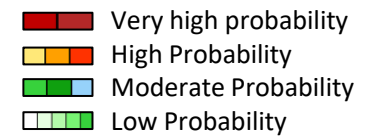


GEFS Week-1 200-hPa Wind Total  
Valid: 20241223 - 20241229



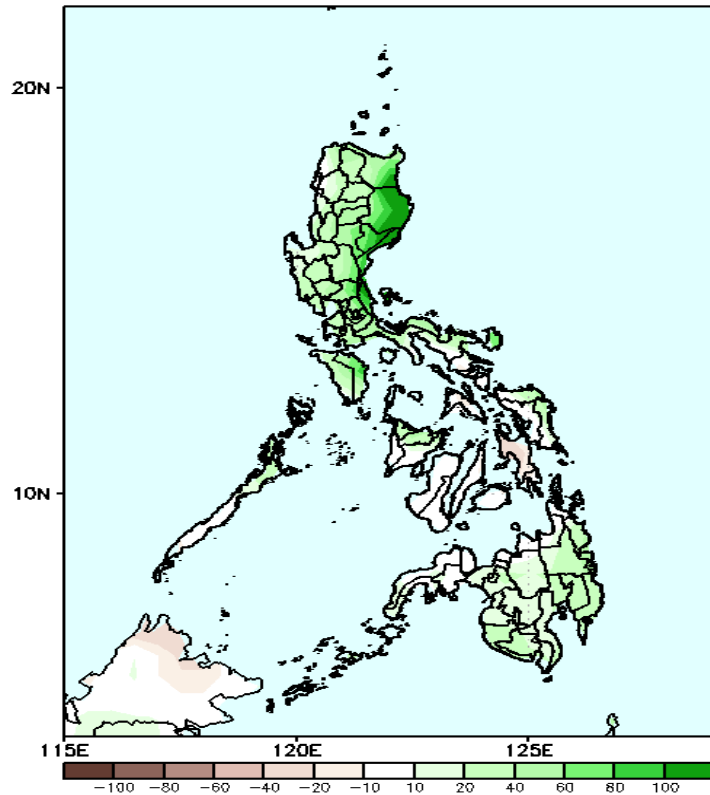
Northeast Monsoon affecting Extreme Northern Luzon while Easterlies affecting the rest of the country during the forecast period

# Precipitation Anomaly and Exceedance Probability > 25/50 mm



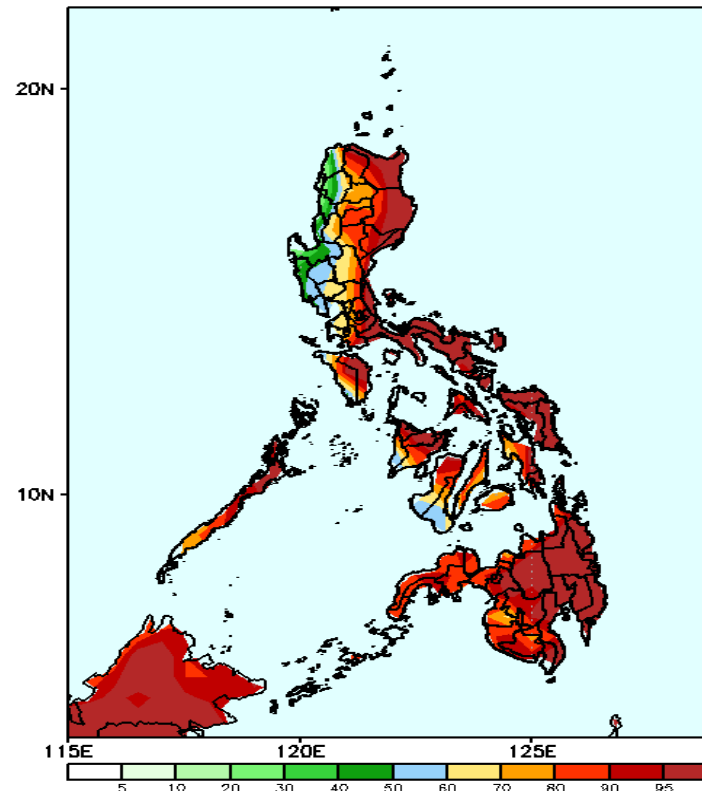
## Week 1: Dec 23-29, 2024

GEFS Week-1 Precip Anomaly  
Valid: 20241223 - 20241229



Increase of Rainfall of up to 80mm is likely in most parts of the country except Leyte Provinces where a deficit of 20-40mm of rainfall is most likely.

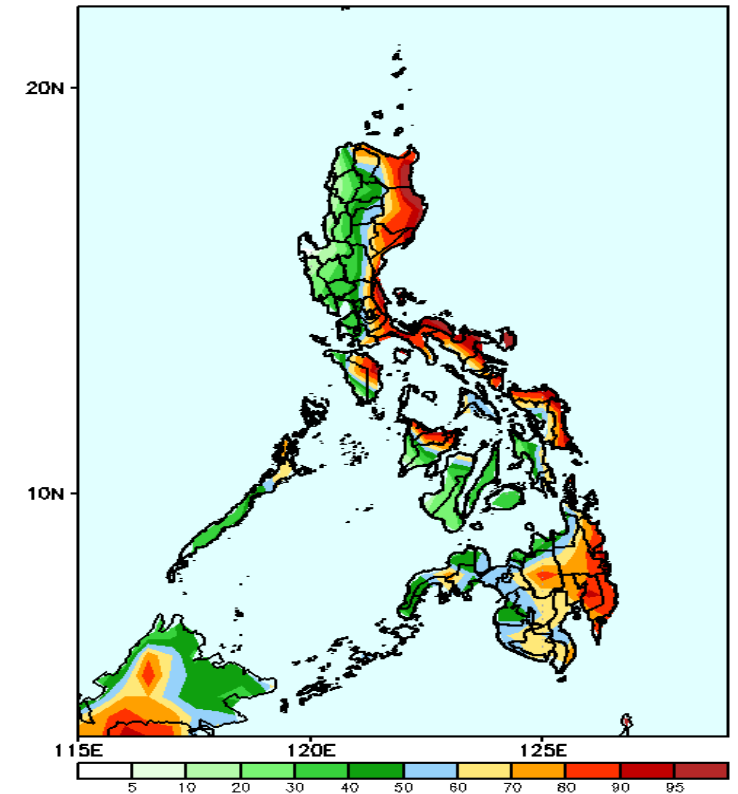
GEFS Week-1 Exceedance Prob. > 25mm  
Valid: 20241223 - 20241229



### Probability to Exceed 25mm

- High to very high over Eastern and Southern Luzon, most of CAR and most of Visayas and Mindanao;
- Moderate to high over the western section of Luzon. Antique and southwestern part of Negros Region.

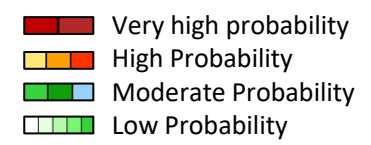
GEFS Week-1 Exceedance Prob. > 50mm  
Valid: 20241223 - 20241229



### Probability to Exceed 50mm

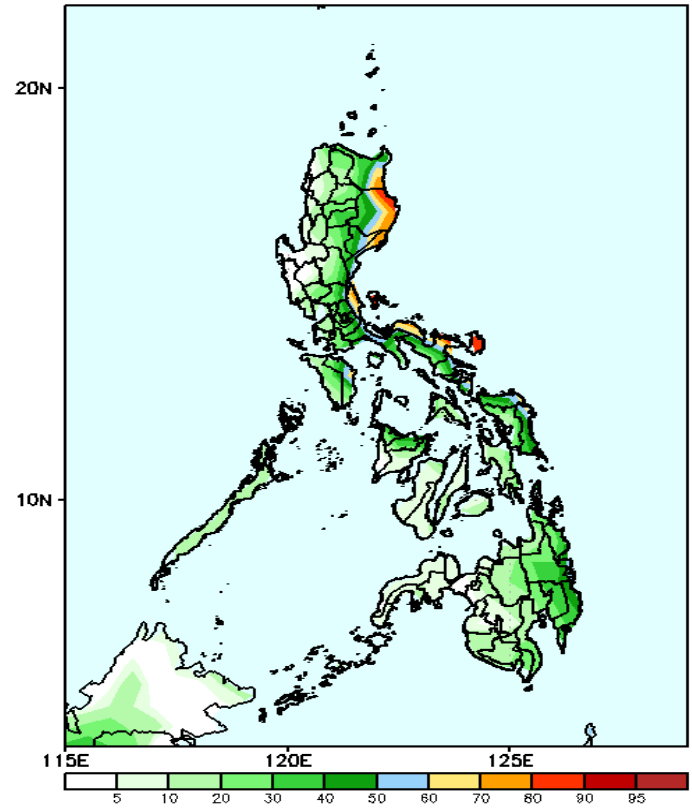
- High to very high over the eastern portions of Luzon and Visayas;
- Moderate to high over CAR, the rest of Southern Luzon, NCR, Aklan, Capiz, northern part of Iloilo and Negros Occidental, the rest of Eastern Visayas, and Mindanao;
- Low to moderate over the rest of Luzon and Visayas.

# Exceedance Probability > 100/150/200 mm



## Week 1: Dec 23-29, 2024

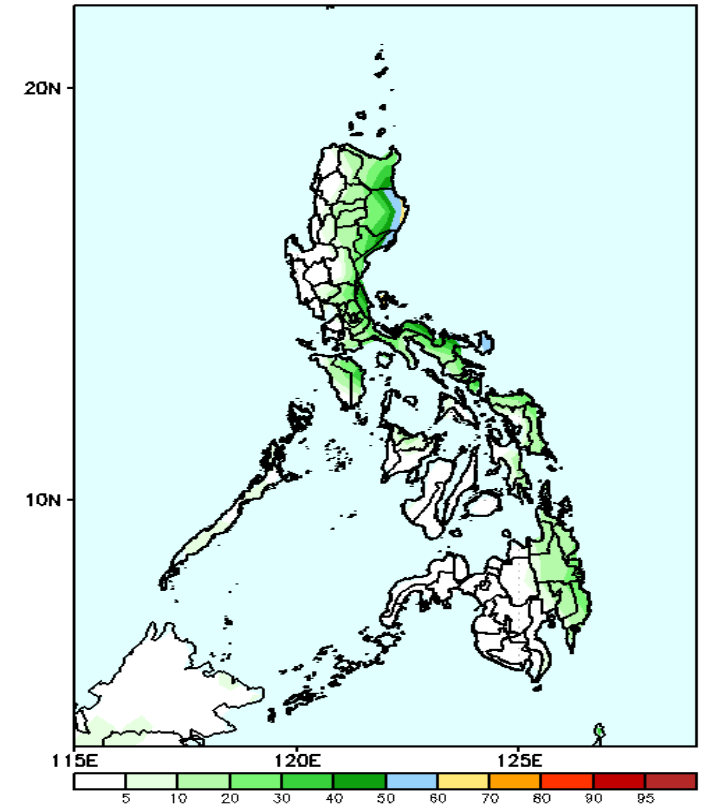
GEFS Week-1 Exceedance Prob. > 100mm  
Valid: 20241223 - 20241229



### Probability to Exceed 100mm

- Moderate to high over Aurora, the eastern portions of Cagayan, Isabela, Quezon and Bicol Region, Oriental Mindoro, and Northern and Eastern Samar;
- Low to moderate over the rest of the country.

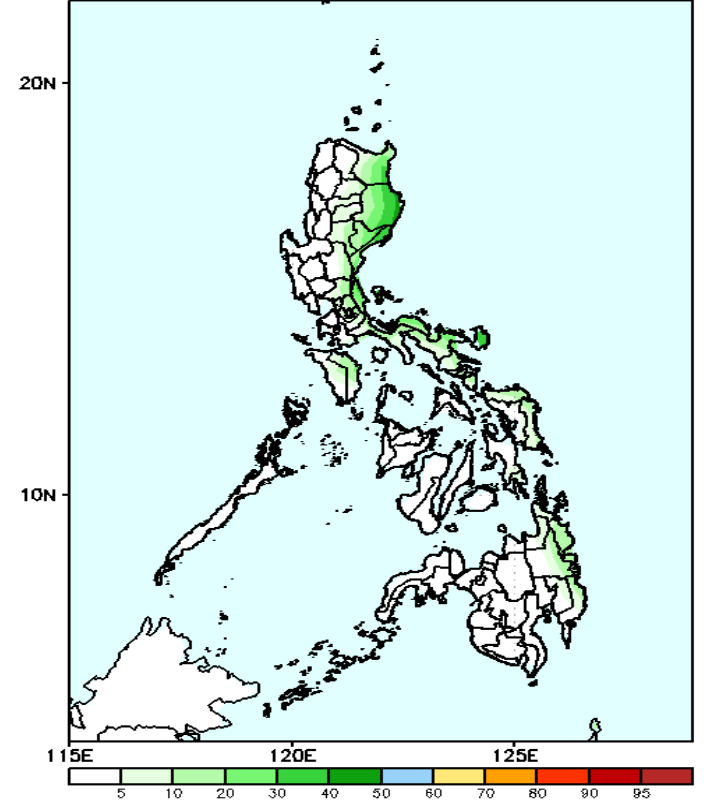
GEFS Week-1 Exceedance Prob. > 150mm  
Valid: 20241223 - 20241229



### Probability to Exceed 150mm

- Moderate to high over the easternmost parts of Isabela and Catanduanes;
- Low over the rest of the country.

GEFS Week-1 Exceedance Prob. > 200mm  
Valid: 20241223 - 20241229



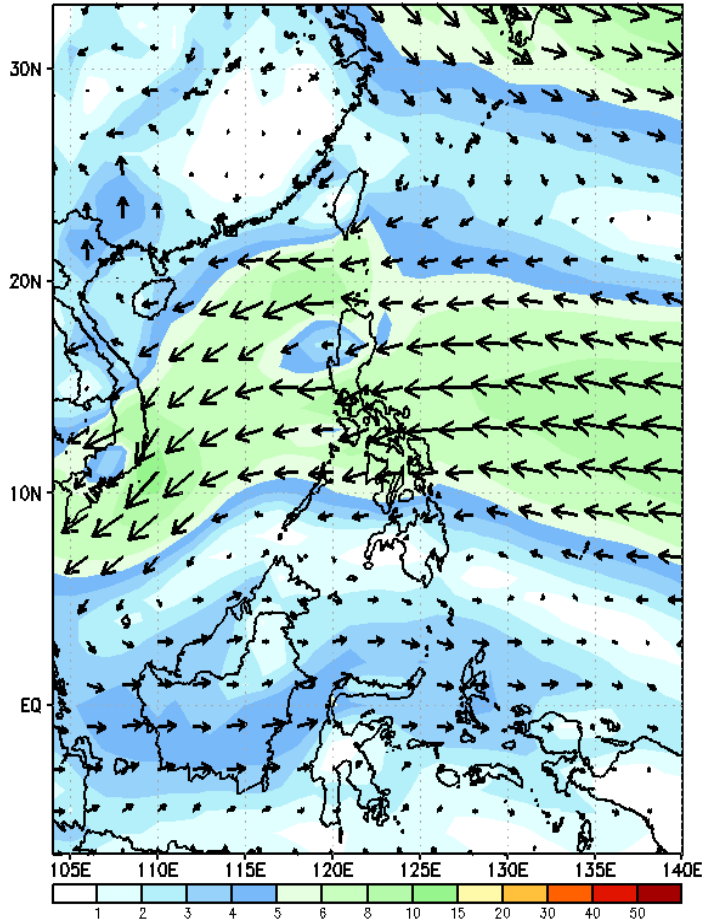
### Probability to Exceed 200mm

- Low across the country.

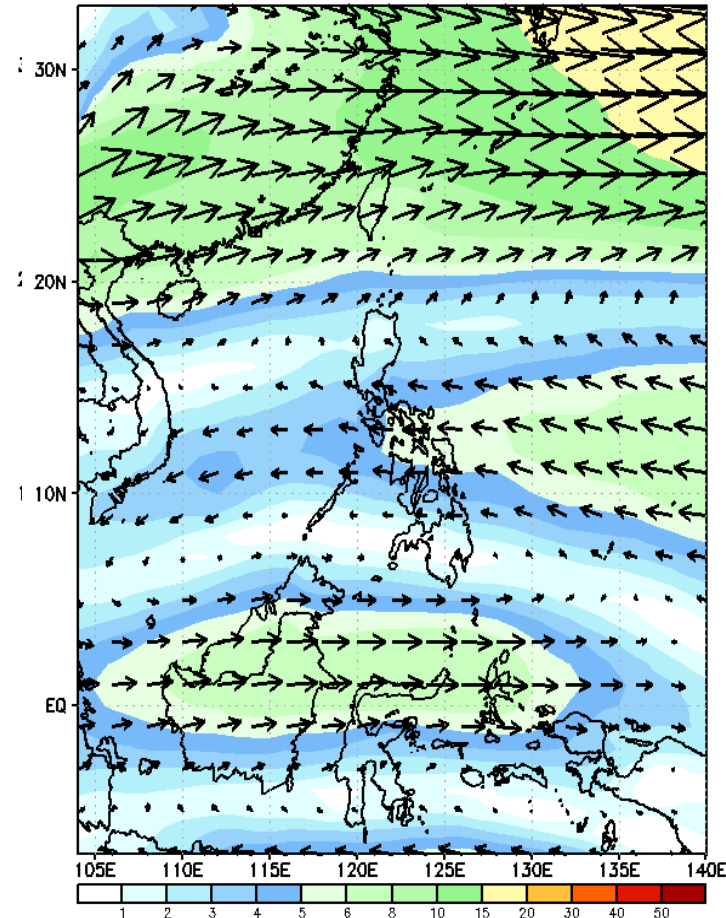
# GEFS Week-2 Wind Forecasts:

Week 2: Dec 30 – Jan 05, 2024

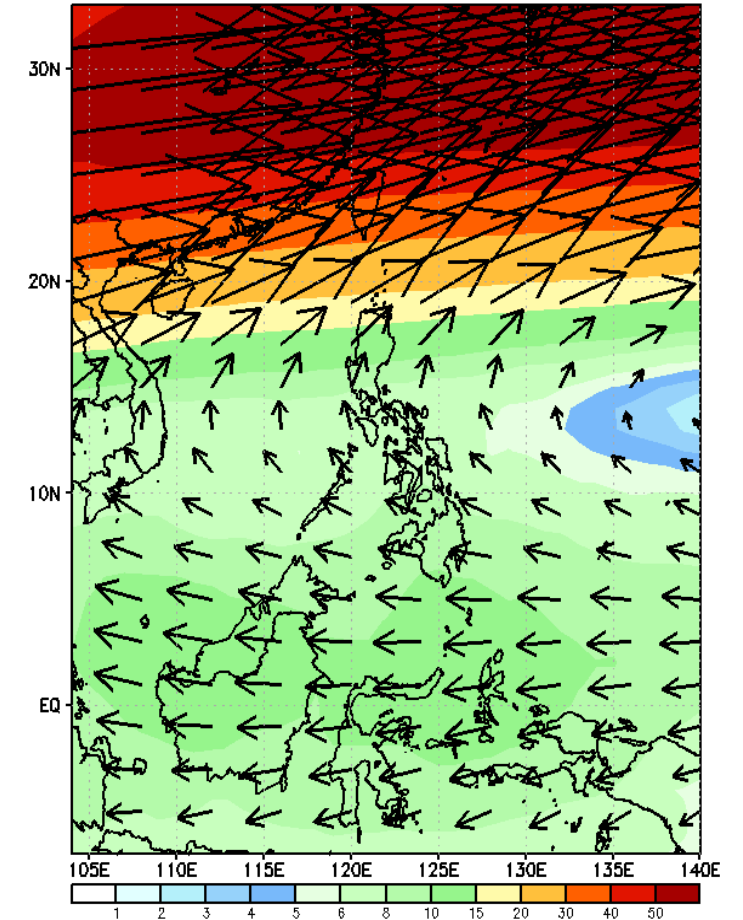
GEFS Week-2 850-hPa Wind Total  
Valid: 20241230 – 20250105



GEFS Week-2 700-hPa Wind Total  
Valid: 20241230 – 20250105

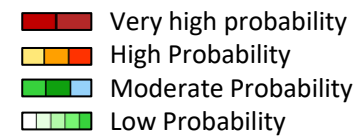


GEFS Week-2 200-hPa Wind Total  
Valid: 20241230 – 20250105



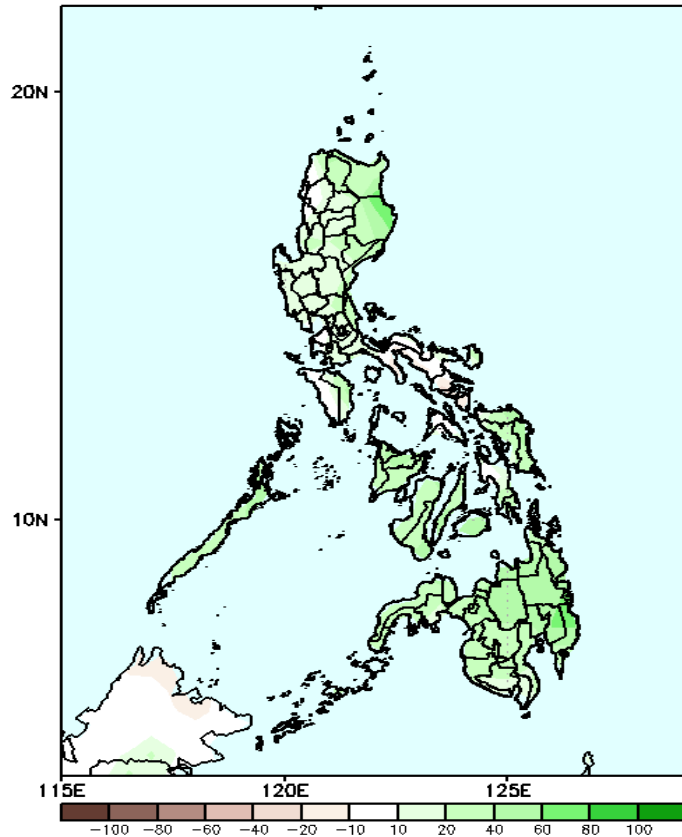
Northeast Monsoon will likely affect Extreme Northern Luzon while Easterlies will likely affect the rest of the country during the forecast period

# Precipitation Anomaly and Exceedance Probability > 25/50 mm



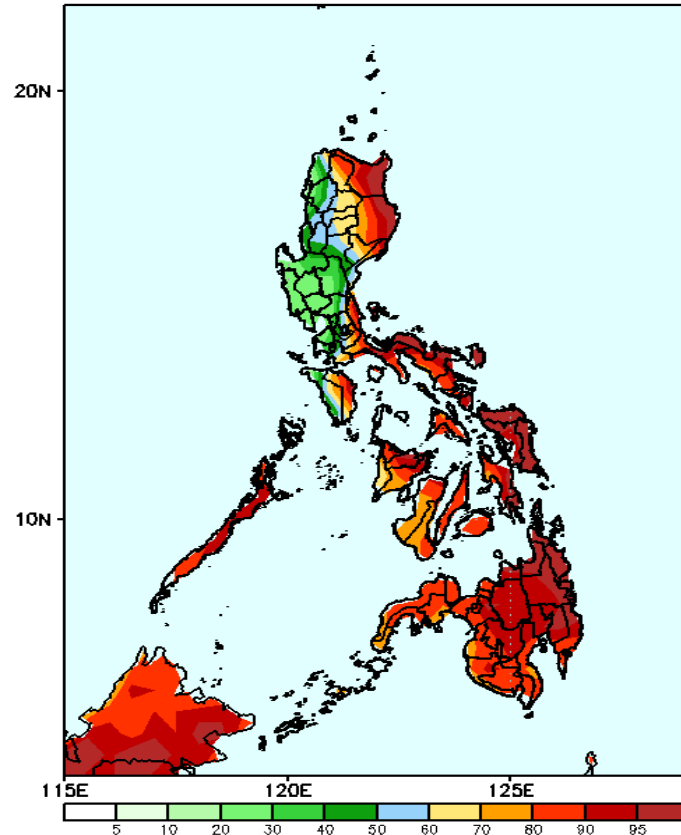
Week 2: Dec 30 – Jan 05, 2024

GEFS Week-2 Precip Anomaly  
Valid: 20241230 – 20250105



Increase of Rainfall of 20-60mm is most likely in most parts of the country.

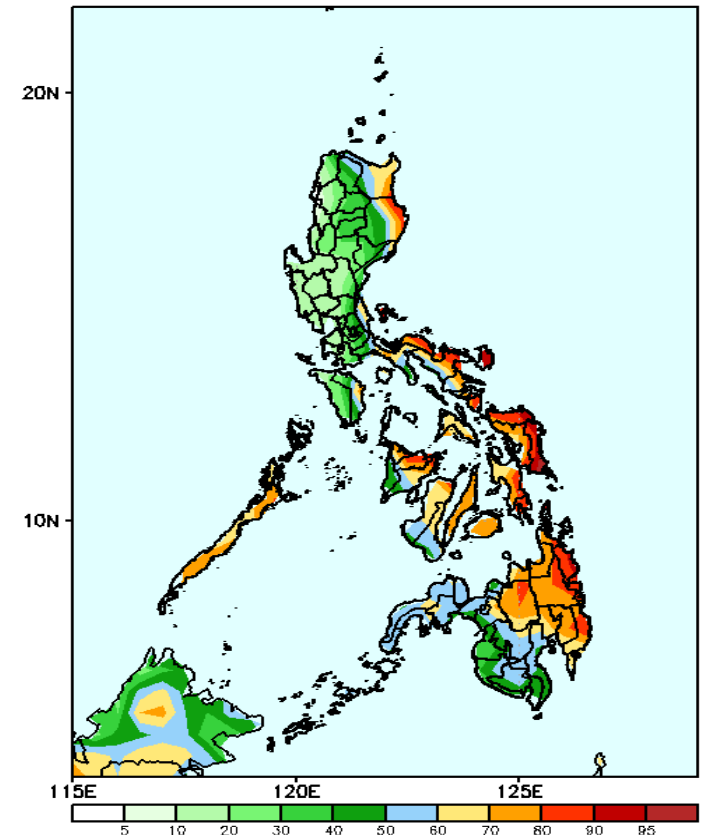
GEFS Week-2 Exceedance Prob. > 25mm  
Valid: 20241230 – 20250105



## Probability to Exceed 25mm

- High to very high over most of Eastern Luzon, Palawan, and most of Visayas and Mindanao;
- Moderate to high over Aurora, CAR, and the rest of Southern Luzon;
- Low to moderate over the rest of Luzon.

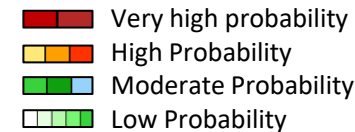
GEFS Week-2 Exceedance Prob. > 50mm  
Valid: 20241230 – 20250105



## Probability to Exceed 50mm

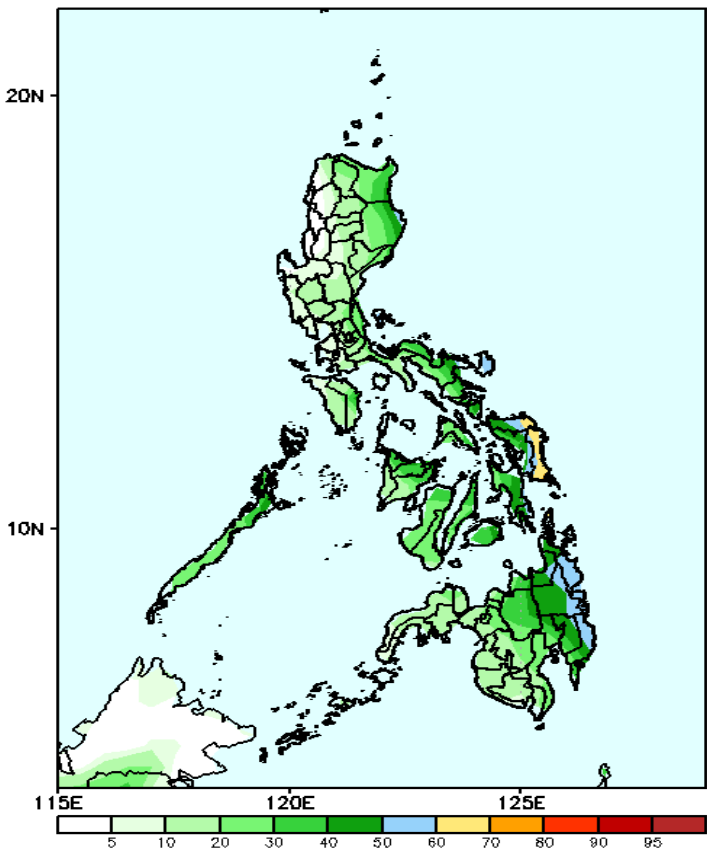
- High to very high over the eastern part of Bicol Region and Batanes, Eastern Visayas, and Caraga;
- Moderate to high over Apayao, Quezon, Palawan, Marinduque, Romblon, and the rest of Cagayan Valley, Visayas, and Mindanao;
- Low over the rest of Luzon.

# Exceedance Probability > 100/150/200 mm



## Week 2: Dec 30 – Jan 05, 2024

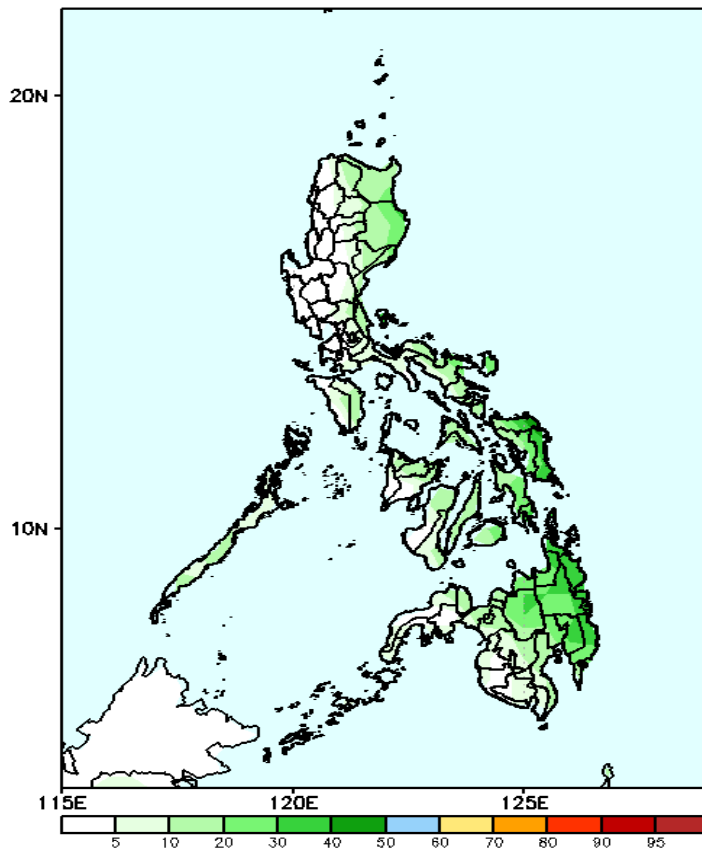
GEFS Week-2 Exceedance Prob. > 100mm  
Valid: 20241230 – 20250105



### Probability to Exceed 100mm

- Moderate to high over Catanduanes, Samar Provinces, and Eastern Mindanao;
- Low to moderate over the rest of the country.

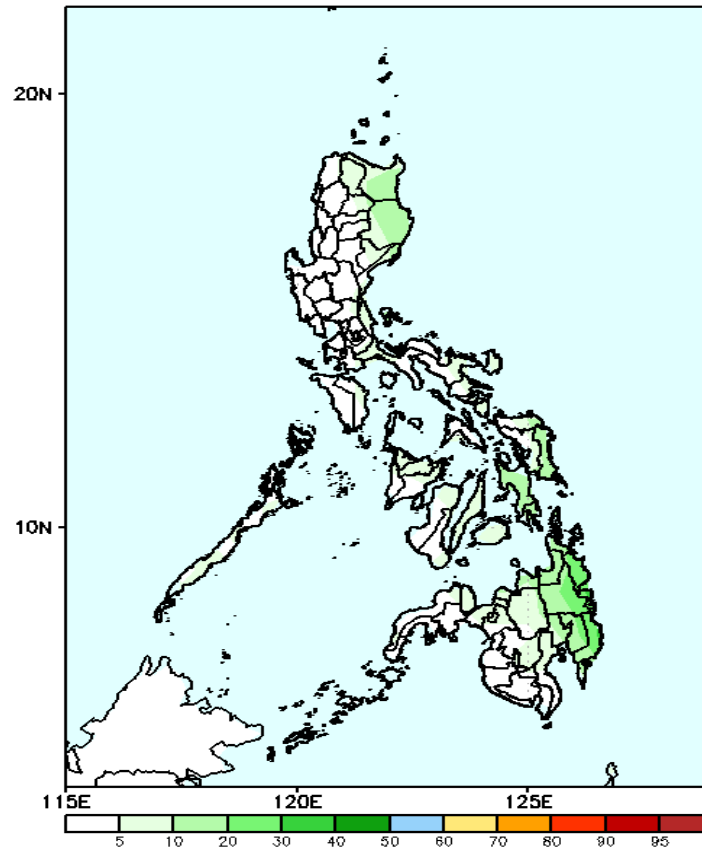
GEFS Week-2 Exceedance Prob. > 150mm  
Valid: 20241230 – 20250105



### Probability to Exceed 150mm

- Low to moderate over the eastern sections of Visayas and Mindanao;
- Low over the rest of the country.

GEFS Week-2 Exceedance Prob. > 200mm  
Valid: 20241230 – 20250105

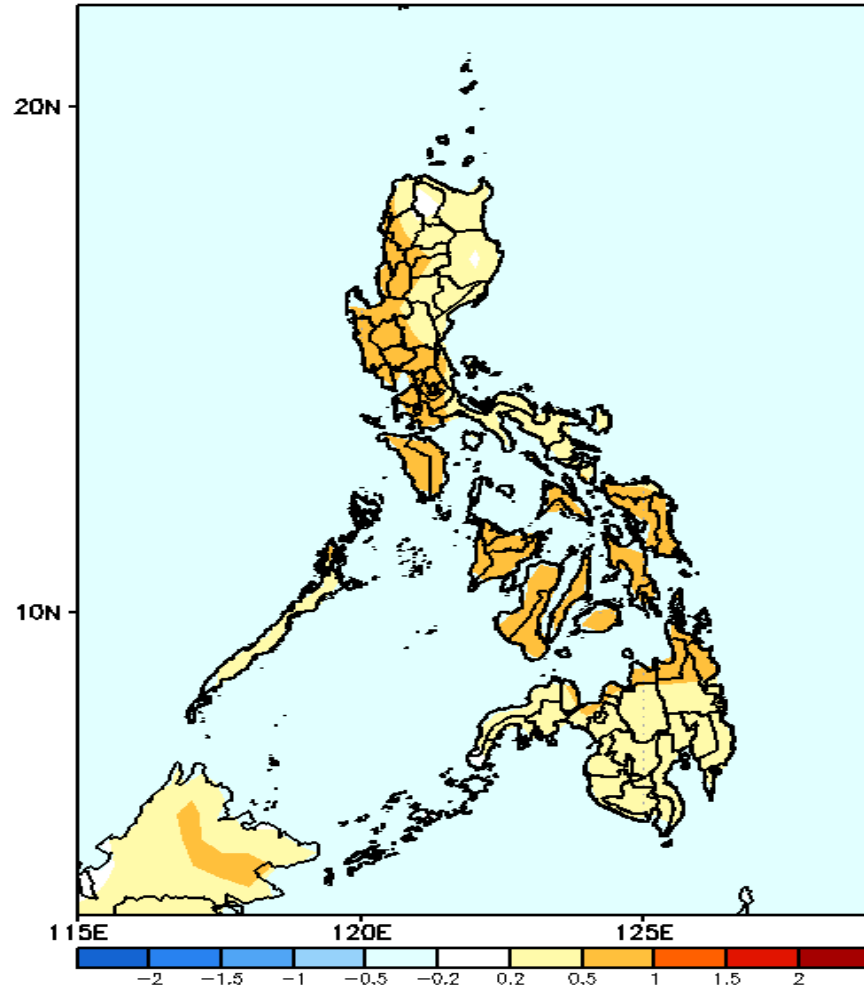


### Probability to Exceed 200mm

- Low across the country.

# GEFS Week-1 & 2 Forecasts: T2m Anomaly

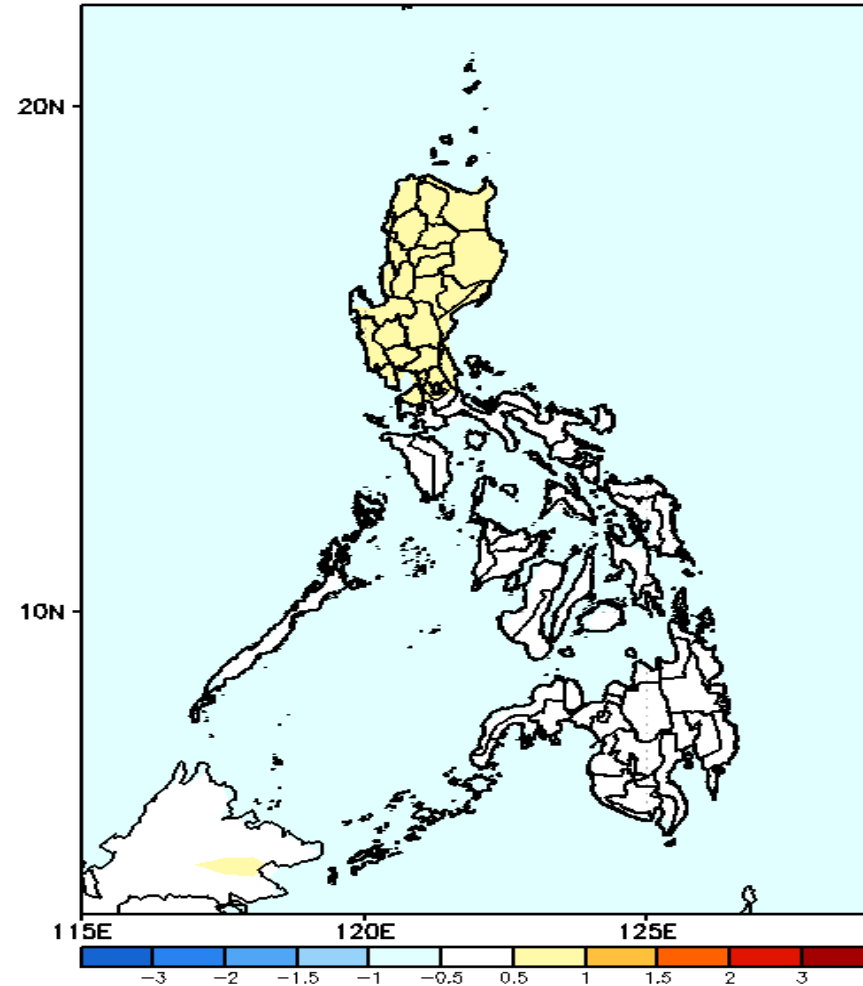
GEFS Week-1 T2m Anomaly  
Valid: 20241223 - 20241229



**2m Temperature Week 1: Dec 23-29, 2024**

Slightly warmer to warmer than average surface air temperature will likely be experienced in most parts of the country.

GEFS Week-2 T2m Anomaly  
Valid: 20241230 - 20250105



**2m Temperature Week 2: Dec 30 - Jan 05, 2024**

Near to slightly warmer than average surface air temperature will likely be experienced in most parts of the country.